

e-STUDIO A4/LT Printer Plug-in User Guide

Rev 02

CONTENTS

OVERVIEW 3

Plug-in installation 4

Plug-in Functions..... 8

OVERVIEW

This software plug-in is applicable to the printer driver. Basic features are provided when printing to supported models below.

Supported Models:

e-STUDIO338CS/388CS/388CP/389CS/479CS

e-STUDIO408S/408P/409S/409P/448S/478S/478P/528P

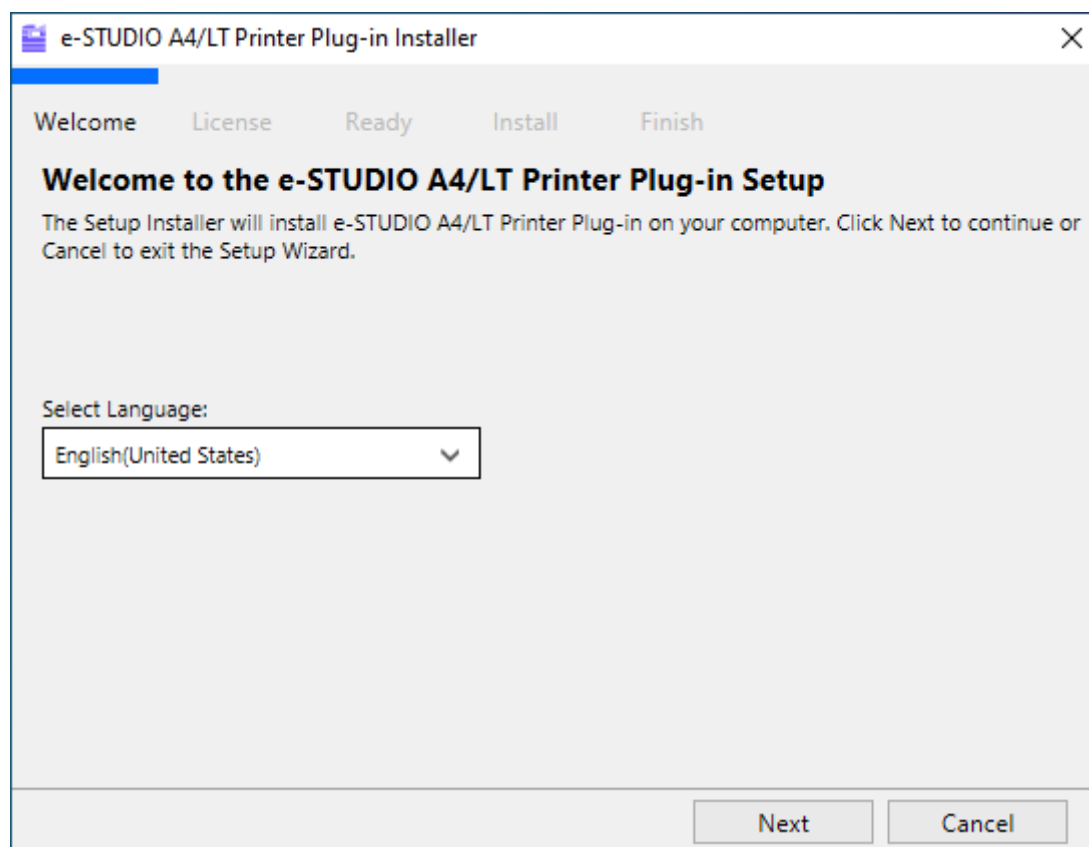
Plug-in installation

Before installing this Plug-in, TOSHIBA Universal Printer 2 driver needs to be installed. This Plug-in is applicable to TOSHIBA Universal Printer 2 driver equal to or newer than version below:

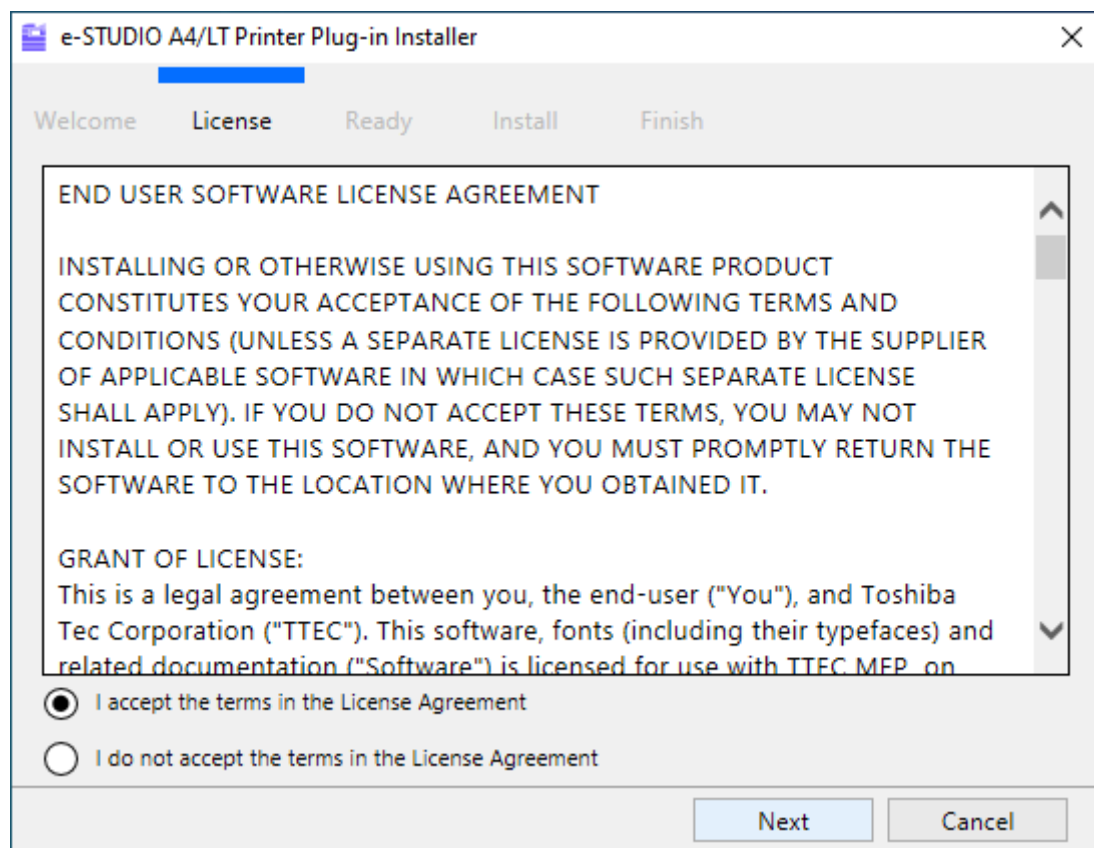
TOSHIBA Universal Printer 2

Version 7.222.5412.0

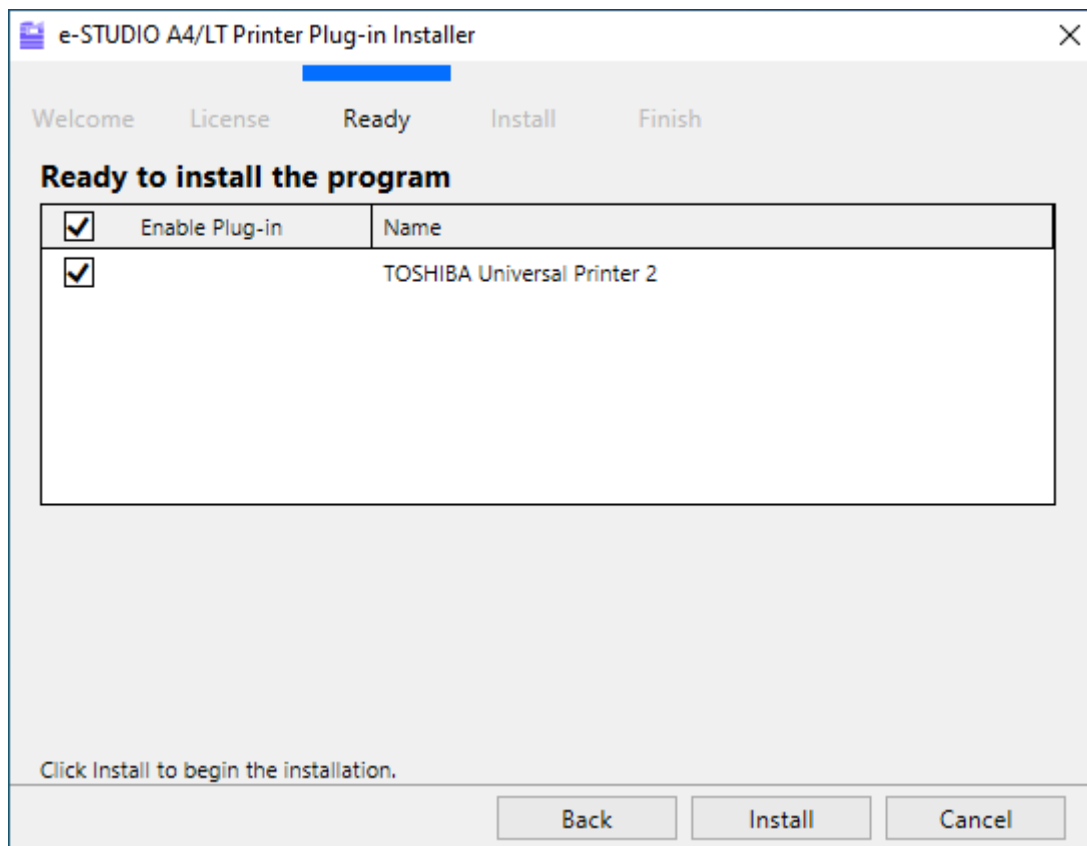
1. Copy [e-STUDIOA4LT_PD_Plugin_01_202106.zip] to the computer and decompress it.
2. Double click [essetup.exe] to start e-STUDIO A4/LT Printer Plug-in Installer.
3. Click [Next].



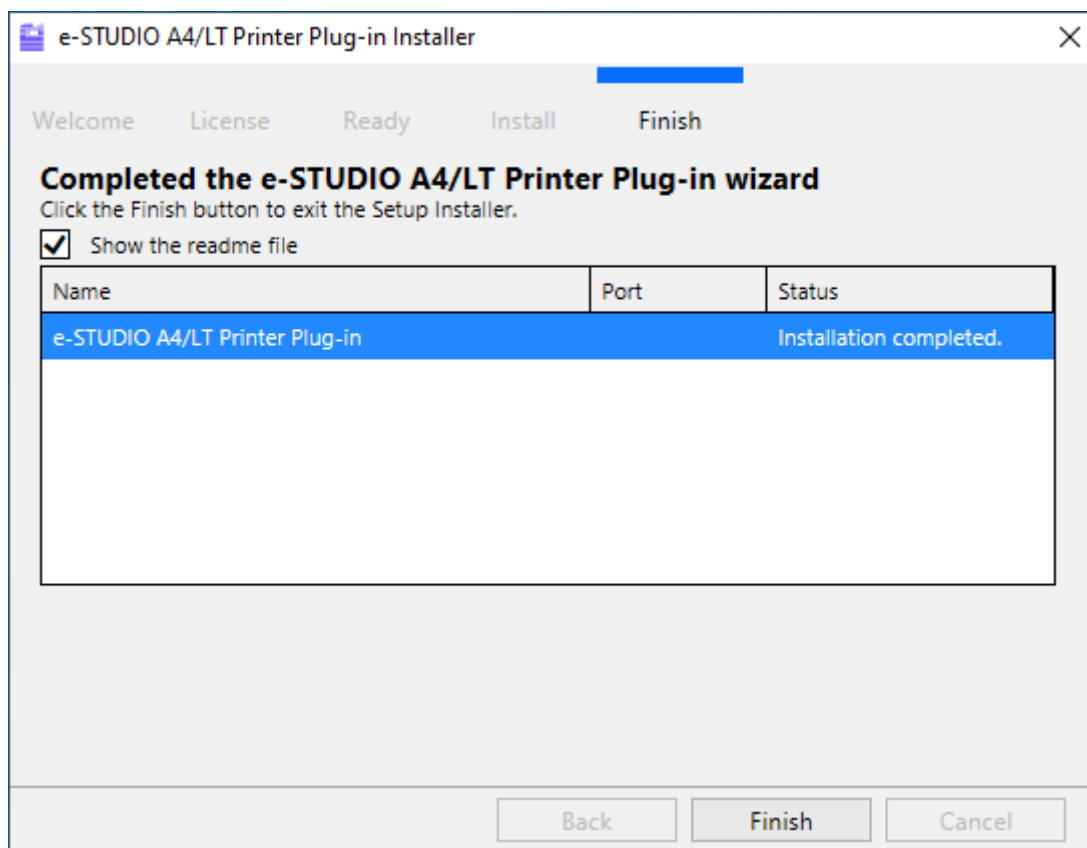
4. Select [I accept the terms in the License Agreement] and click [Next].



5. Select the printers which you want to enable plug-in, and then click [Install].



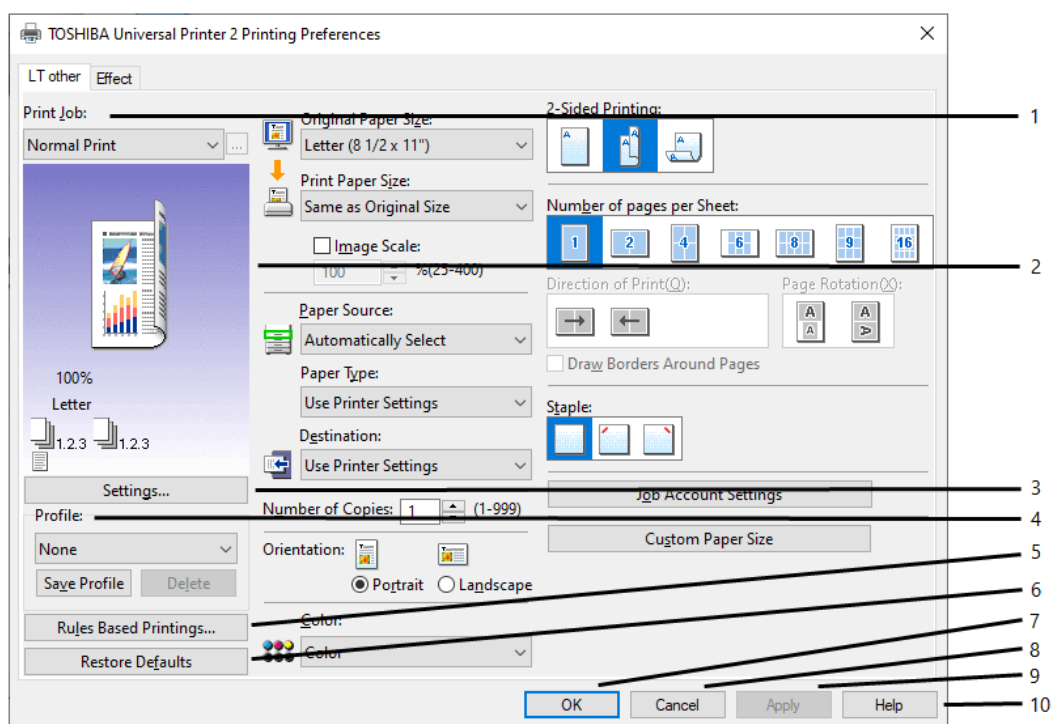
6. Click [Finish].



Plug-in Functions

This section describes print options in the printer driver when this Plug-in is enabled.

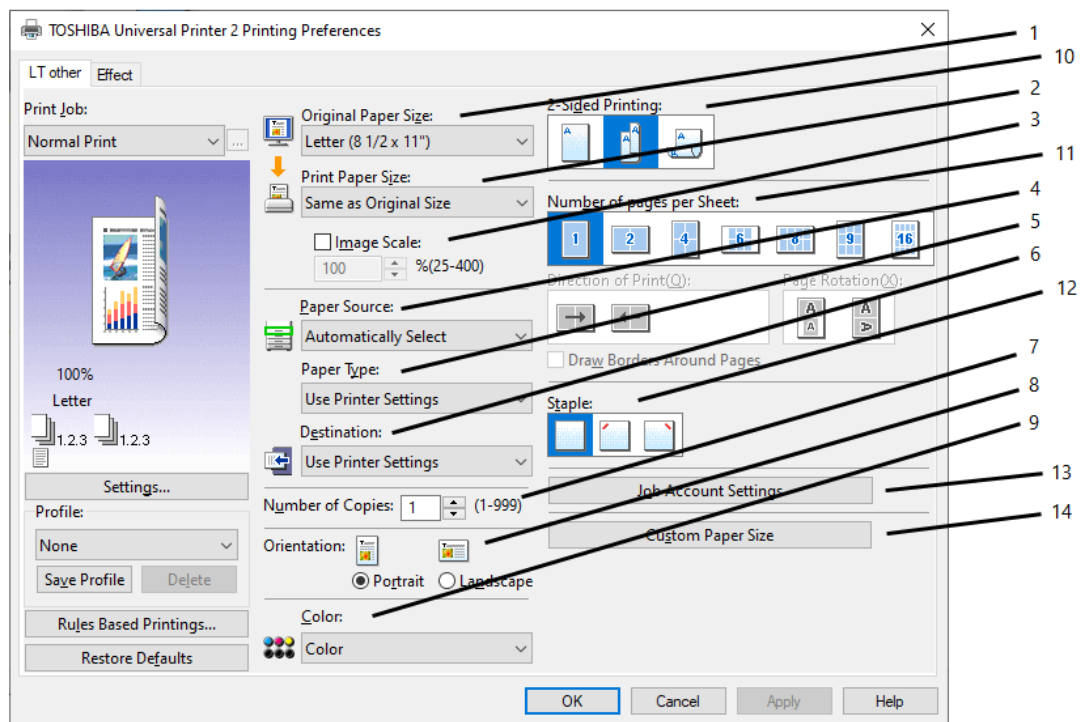
Common Settings Among Tabs



	Item Name	Description
1	Print Job	This sets the type of print job.
2	Preview window	In the Preview window, you can preview how a document will be printed under the current settings of the printer driver. The image of a page to which the set print options are applied is displayed.
3	Settings	The set print options and their details are displayed in a list.
4	Profile	Print option settings can be saved on your storage device. You can save print option settings by clicking [Save Profile] and easily load a setting file by selecting a profile name in the box.
5	Rules Based Printings	The set print functions can be applied to each application.

6	Restore Defaults	Click this to restore the settings to the original factory defaults.
7	OK	Click this to enter the input settings and complete the print option settings.
8	Cancel	Click this to cancel the input settings and exit the print option settings.
9	Apply	Click this to enter the input settings without closing the print option settings. This button is only displayed when the printer properties are accessed from the Printers folder. This button is enabled when you make any changes in settings.
10	Help	Click this to browse Help for the printer driver.
	Note No description about [LT other] tab.	

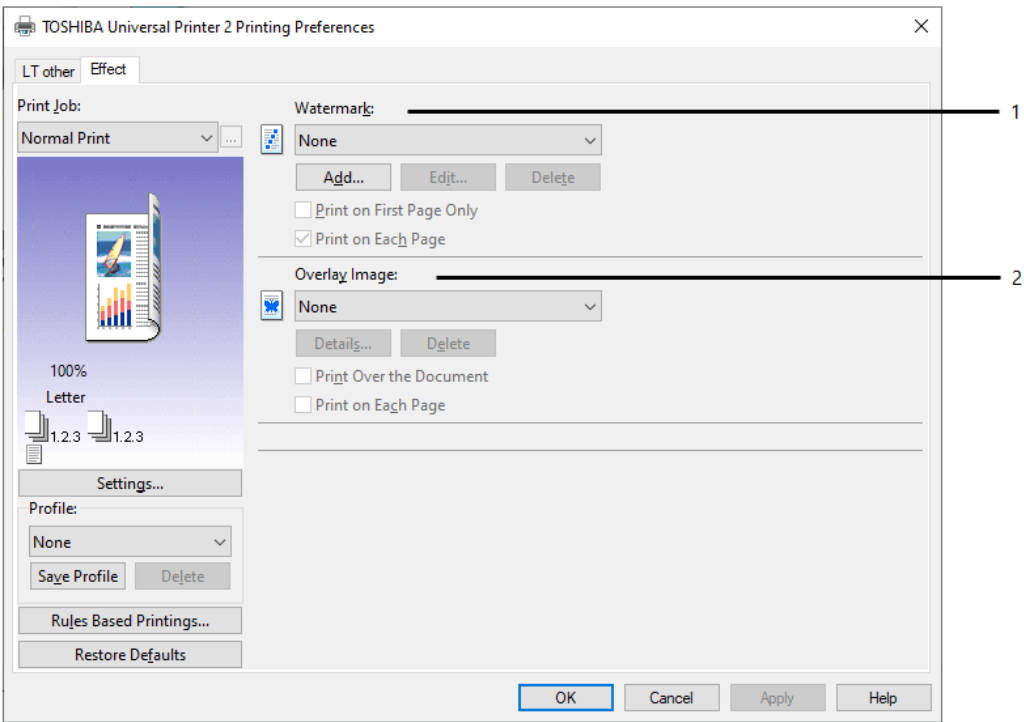
[LT other] tab



	Item Name	Description
1	Original Paper Size	This selects the size of a document to be printed.
	Tip You can select from custom paper sizes in addition to standard paper sizes. You can set custom paper sizes in the [Custom Paper Size].	
2	Print Paper Size	Select the paper size you want to print.
	Tip You can select from custom paper sizes in addition to standard paper sizes. You can set custom paper sizes in the [Custom Paper Size].	
3	Image Scale	Select this check box and specify the image scale.
4	Paper Source	This selects a paper source to print a job in the most suitable paper size.
5	Paper Type	This sets the media type of the paper.
6	Destination	This selects the tray to which the print job is made to exit.
7	Number of Copies	This sets the number of printed copies.
8	Orientation	This sets the paper printing direction.
9	Color	This sets whether a print job is printed in the color or

		black mode.
10	2-Sided Printing	This sets printing on both sides of paper.
11	Number of pages per Sheet	This sets the printing of multiple pages on one sheet.
12	Staple	This sets whether a print job is printed with staples. Select the staple position.
13	Job Account Settings	Open the Job Accounting preferences dialog box and modify the Job Accounting settings that are associated with the print job.
14	Custom Paper Size	Click this to specify the custom paper size.
	<p>Note</p> <ul style="list-style-type: none"> - In order to set [Custom Paper Size], you must access the printer driver properties from the [Devices and Printers] folder, but not from the [Print] dialog box in the application. - The [Custom Paper Size] can be set only by an operation with the administrator privilege. 	

[Effect] tab

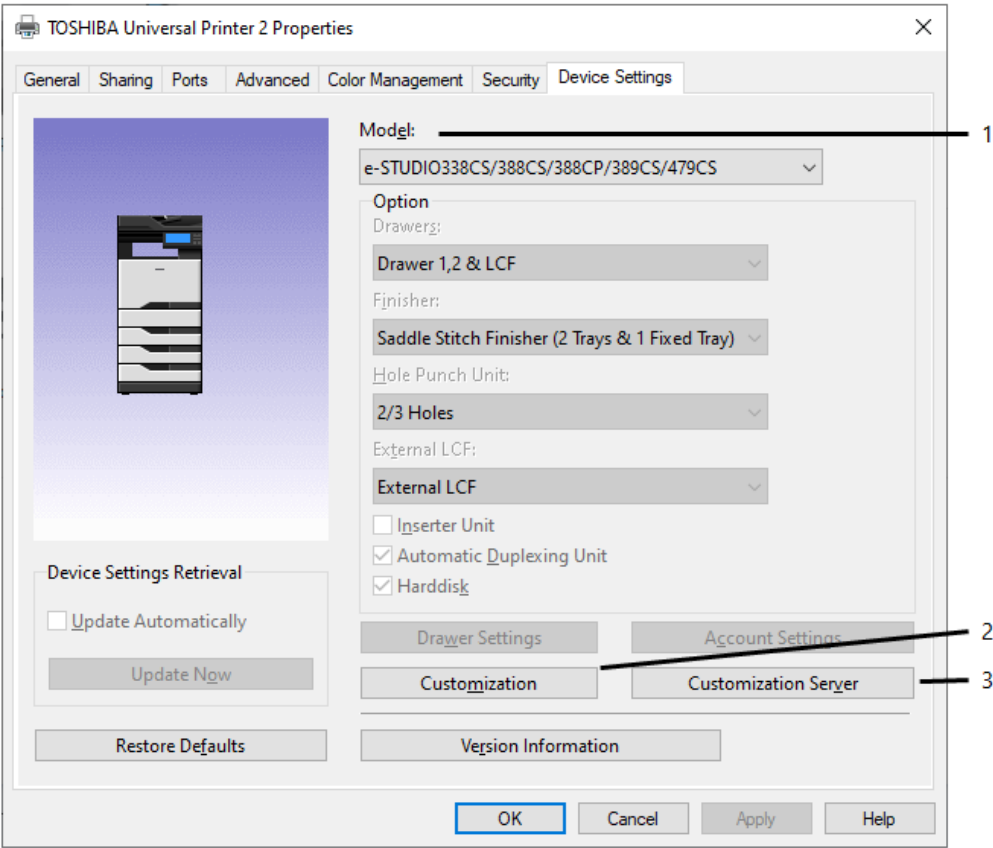


	Item Name	Description
1	Watermark	<p>This selects the watermark to be used or edited. The following values except [None] are the default watermarks that have been registered in the printer driver. Up to 15 new watermarks can be added in this box.</p> <p>- [Add] Click this to create a new watermark. When you click [Add], the [Watermark] dialog box appears.</p> <p>- [Edit] Select a watermark from the [Watermark] box and click it to edit the watermark. When you click [Edit], the [Watermark] dialog box appears.</p> <p>- [Delete] Select a watermark from the [Watermark] box and click it to delete a watermark.</p> <p>Note The default watermarks can be deleted but, once deleted, they cannot be restored.</p>

	<ul style="list-style-type: none"> - Print on First Page Only <p>This prints the selected watermark only on the first page of the document.</p> <ul style="list-style-type: none"> - Print on Each Page <p>This prints the watermark on each page. The watermarks are printed on reduced each pages depending on the [Number of pages per Sheet] setting. When it is turned off, a watermark is printed on each sheet that contains multiple pages reduced by the [Number of pages per Sheet] setting.</p>	
2	Overlay Image	<p>This selects an overlay image to be used. This feature allows you to print an image on the background of a print job, although the watermark allows only text.</p> <p>Note</p> <ul style="list-style-type: none"> - When [Overlay Image] is selected together with the N-up printing, 1 overlay image will be printed on the entire page, regardless of the number of images set in 1 page. - Both the overlay file and the documents on which you superimpose the overlay image must be created in the same size, color mode and orientation. <p>Tip</p> <p>If you want to use an overlay image in your job, you must first create an overlay file. To do this, create an overlay image with most applications and print it as an overlay file. You can enable creating an overlay file on the [Print Job] box.</p> <ul style="list-style-type: none"> - Details <p>Click this to set which overlay image is applied to which page, such as changing the type of overlay image for odd pages and that for even pages or applying an overlay image only to the specified pages. If you click this when [Multiple Overlays] is selected in the [Overlay Image] box, the [Multiple Overlays] dialog box appears.</p> <ul style="list-style-type: none"> - Delete <p>Click this to delete the overlay image that you select in the box.</p> <p>Note</p> <p>[None] and [Multiple Overlays] cannot be deleted.</p> <ul style="list-style-type: none"> - Print Over the Document <p>This prints the overlay file on top of the printed document.</p> <ul style="list-style-type: none"> - Print on Each Page

	This prints the overlay file on each page when printing multiple pages on one sheet set in the [Number of pages per Sheet] printing.
--	--

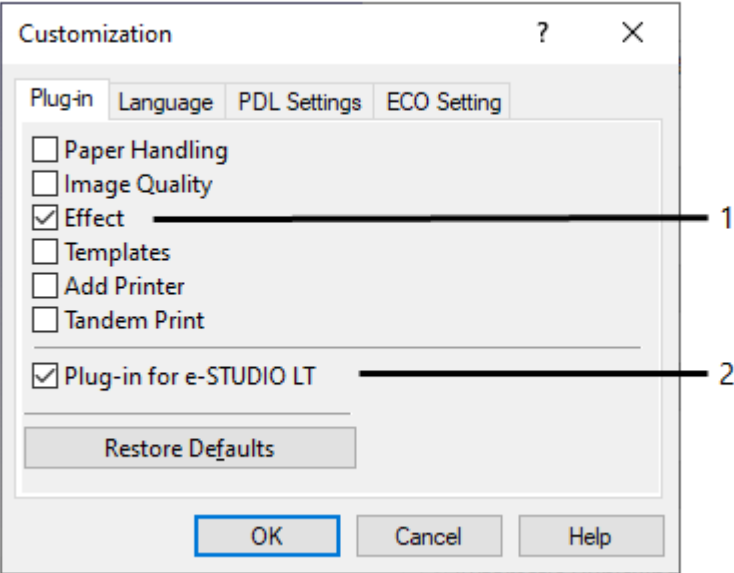
[Device Settings] tab



	Item Name	Description
1	Model	This sets the model type.
2	Customization	This changes the Plug-in settings or the printer driver language.
3	Customization Server	Downloads and applies the customized printing function settings from the Customization server.
	Tip - It is necessary to create a customized package and store it in a Customization server in advance. - For details about the setting of the Customization server, contact your service technician.	

Customization: [Plug-in] tab

You can enable or disable the Plug-in setting.



	Item Name	Description
1	Effect	This enables the [Effect] tab.
2	Plug-in for e-STUDIO LT	This enables the [LT other] tab.